

Light efficiency:

106 Lumen/Watt

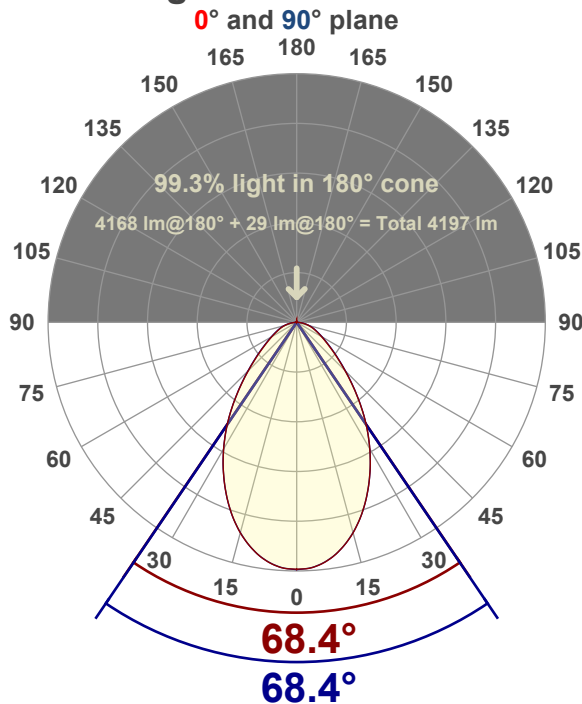
Color temperature:

3079 K

Light quality:

CRI:83.0, R_g:93.8, R_r:85.2**P: 3 / V: - / F: -****Output: 4168 lm****Peak: 2827 cd****Power: 39.4 W****Voltage: 121 V****Current: 0.328 A****PF: 0.99****THD: 6.4 %**

Angular Distribution



Product name:

EDGE-22-WH - 30K 40W

Test Date:

6/17/2019

Beam Angle (50% of the brightness of the centre):

68.4°

Field Angle (10% of the brightness of the centre):

126.5°

Cut Off Angle (2.5% of the brightness of the centre):

163.5°

Beam Details

*measured at centre of beam

Mounting Height (feet)\(meter)	Lux*	Footcandles*	Beam width (feet) / (meter)
4 ft / 1.2 m	1901 lx	177 fc	5.4 ft / 1.7 m
8 ft / 2.4 m	475 lx	44 fc	10.9 ft / 3.3 m
12 ft / 3.7 m	211 lx	20 fc	16.3 ft / 5 m
16 ft / 4.9 m	119 lx	11 fc	21.7 ft / 6.6 m
20 ft / 6.1 m	76 lx	7 fc	27.2 ft / 8.3 m

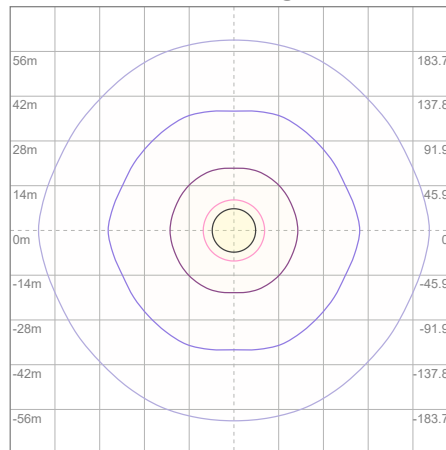
Beam center

Photometric Testing Report

Zonal Lumen Summary

Zone	Lumen	%Luminaire
0-30	1860	44.63%
0-40	2707	64.95%
0-60	3715	89.13%
60-90	453	10.87%
70-100	195	4.68%
90-120	0.000	0.00%
0-90	4168	100.00%
90-180	0.000	0.00%
0-180	4168	100.00%

ISO Lux Diagram



Lux at center:	304 lx
3%	9.12 lx
5%	15.20 lx
10%	30.40 lx
30%	91.20 lx
50%	152.00 lx

Conditions:

Number of planes: 8

Lux distribution on a surface when lamp is mounted at 3.05 meters from the surface.

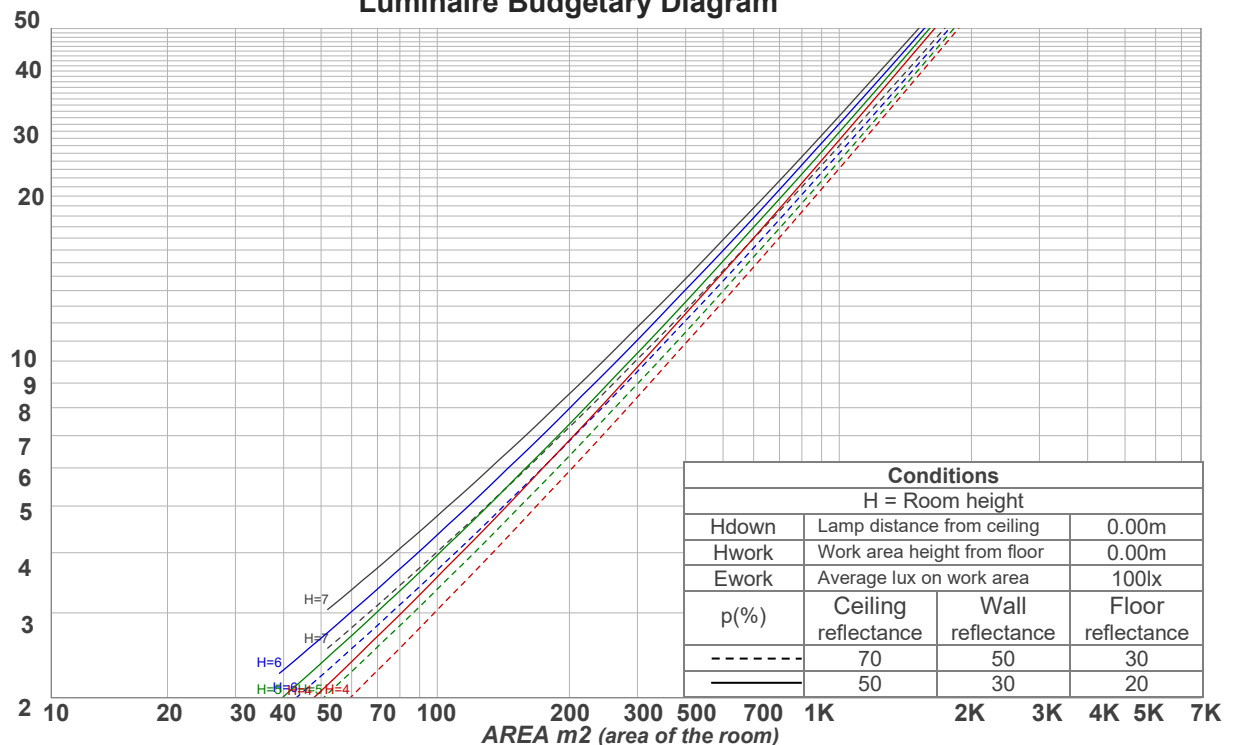
Mounting height: 3.05 meters (10 feet)

Coefficients of Utilization

Ceiling reflectance	80				70				50			30			10			0
Wall reflectance	70	50	30	10	70	50	30	10	50	30	10	50	30	10	50	30	10	0
Floor reflectance	20	20	20	20	20	20	20	20	20	20	20	20	20	20	20	20	20	0
RCR	(RCR: Room Cavity Ratio) Room Values are expressed as percentage of Lumens delivered to the task surface																	
0	119	119	119	119	116	116	116	116	111	111	111	106	106	106	102	102	102	100
1	111	107	104	100	108	105	102	99	101	98	96	97	95	93	93	92	90	88
2	103	96	91	86	100	94	89	85	91	87	83	88	84	81	85	82	79	77
3	96	87	80	75	93	85	79	74	82	77	73	80	75	72	77	74	70	68
4	89	79	71	66	87	78	71	65	75	69	65	73	68	64	71	67	63	61
5	83	72	64	59	81	71	64	58	69	63	58	67	62	57	65	61	57	55
6	78	66	58	53	76	65	58	53	64	57	52	62	56	52	61	55	51	50
7	73	61	53	48	71	60	53	48	59	52	48	57	52	47	56	51	47	45
8	68	56	49	44	67	56	49	44	55	48	44	53	48	43	52	47	43	41
9	64	53	45	40	63	52	45	40	51	45	40	50	44	40	49	44	40	38
10	61	49	42	37	60	49	42	37	48	41	37	47	41	37	46	41	37	35

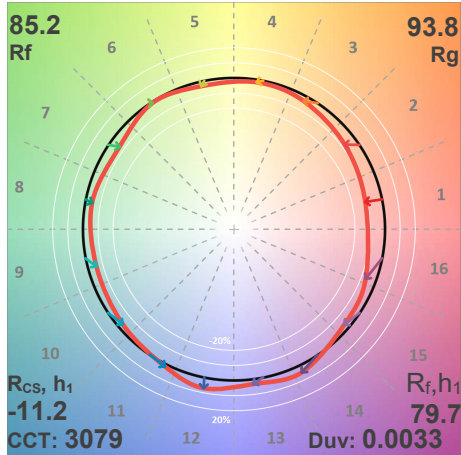
LAMPS (number of lamps)

Luminaire Budgetary Diagram

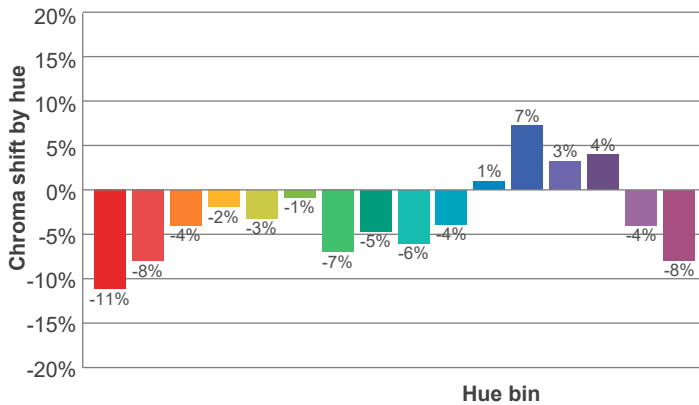
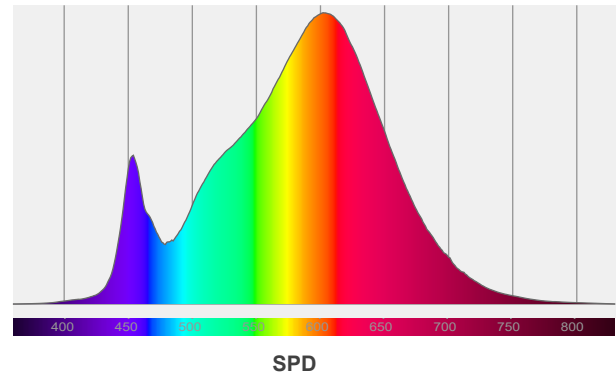
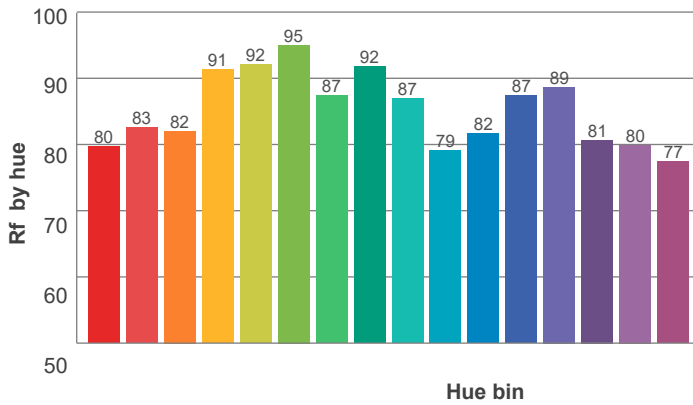
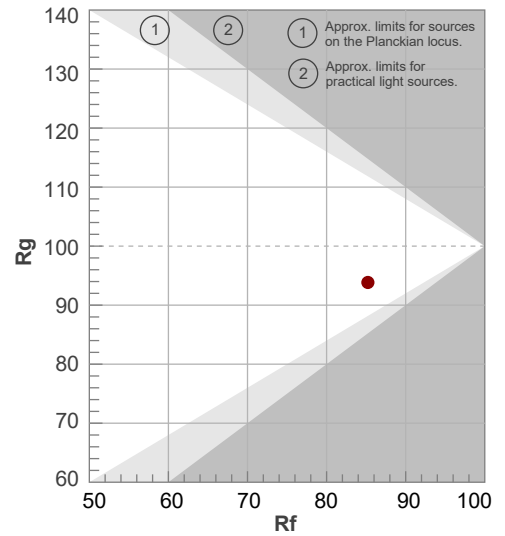


ANSI/IES TM-30-18

P: 3 / V: - / F: -



Hue Bin	R _f	Shifts (%)	
		Chroma	Hue
1	80	-11%	0%
2	83	-8%	6%
3	82	-4%	9%
4	91	-2%	4%
5	92	-3%	3%
6	95	-1%	-2%
7	87	-7%	-3%
8	92	-5%	2%
9	87	-6%	7%
10	79	-4%	12%
11	82	1%	13%
12	87	7%	1%
13	89	3%	-7%
14	81	4%	-15%
15	80	-4%	-12%
16	77	-8%	-15%



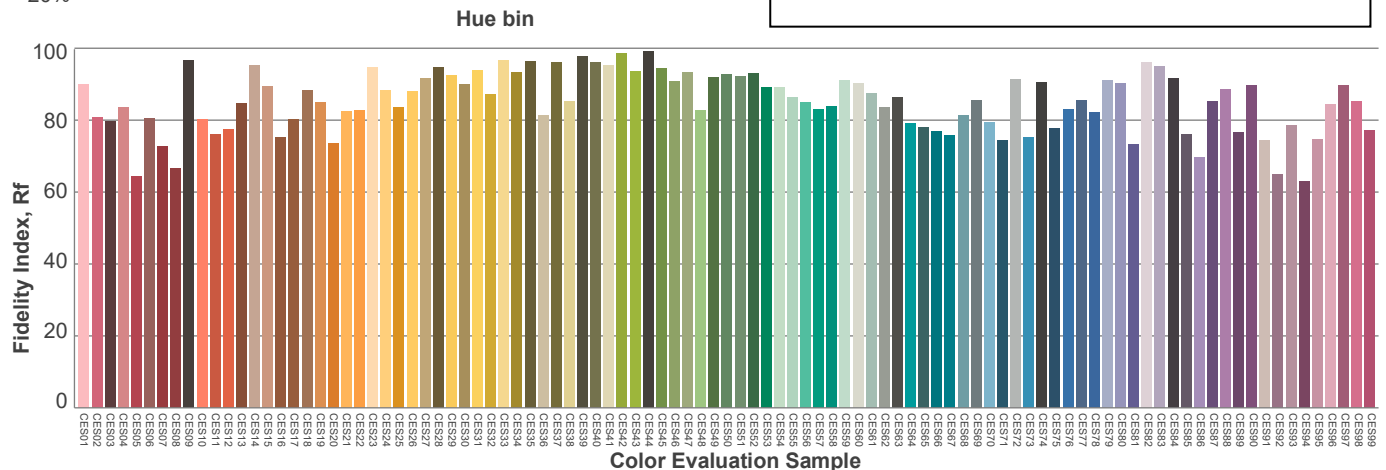
Red: 29.2%, Power=23.2mW

Blue: 9.3%, Power=22.1mW

Green: 27.4%, Power=48.3mW

UVA: 0.3%, Power=0.1mW

Dominant Wavelength: 582nm

1st Peak Wavelength: 603nm2nd Peak Wavelength: 453nm

Glare Evaluation According to UGR

Corrected, comprehensive UGR table according to 117-1995, S/H ratio=0.25

p Ceiling		70	70	50	50	30	70	70	50	50	30
p Walls		50	30	50	30	30	50	30	50	30	30
p Floor		20	20	20	20	20	20	20	20	20	20
Room size H = mounting height above eye level X Y		Viewing direction at right angles to lamp axis					Viewing direction parallel to lamp axis				
2H	2H	14.1	15.0	14.3	15.3	15.5	14.1	15.1	14.3	15.3	15.6
	3H	14.9	16.0	15.3	16.2	16.4	15.0	16.0	15.4	16.3	16.5
	4H	15.4	16.4	15.8	16.6	16.9	15.5	16.5	15.9	16.7	17.0
	6H	15.9	16.7	16.2	17.0	17.4	15.9	16.8	16.2	17.1	17.4
	8H	16.0	16.8	16.3	17.1	17.5	16.0	16.9	16.4	17.2	17.6
	12H	16.0	16.8	16.4	17.2	17.6	16.1	16.9	16.5	17.3	17.7
4H	2H	14.4	15.4	14.8	15.6	15.9	14.4	15.4	14.8	15.6	15.9
	3H	15.6	16.4	16.0	16.8	17.2	15.6	16.4	16.0	16.8	17.2
	4H	16.2	16.9	16.6	17.3	17.8	16.2	16.9	16.6	17.3	17.9
	6H	16.7	17.4	17.2	17.8	18.1	16.7	17.4	17.2	17.8	18.1
	8H	16.9	17.5	17.4	17.9	18.3	16.9	17.6	17.4	17.9	18.3
	12H	17.0	17.5	17.5	17.9	18.4	17.0	17.5	17.5	18.0	18.4
8H	4H	16.4	17.1	16.9	17.4	17.8	16.4	17.1	16.9	17.4	17.8
	6H	17.1	17.6	17.6	18.0	18.6	17.1	17.6	17.6	18.0	18.6
	8H	17.4	17.8	17.9	18.3	18.9	17.4	17.8	17.9	18.3	18.9
	12H	17.5	17.9	18.1	18.4	19.0	17.6	17.9	18.1	18.4	19.0
12H	4H	16.4	16.9	16.9	17.3	17.8	16.4	17.0	16.9	17.4	17.8
	6H	17.1	17.6	17.7	18.1	18.7	17.2	17.6	17.7	18.1	18.7
	8H	17.4	17.8	18.0	18.3	18.9	17.4	17.8	18.0	18.3	18.9
Variation of the observer position for the luminaire distance S											
S = 1.0H		0.2 / -0.3					0.2 / -0.3				
S = 1.5H		0.6 / -0.6					0.6 / -0.6				
S = 2.0H		1.1 / -0.9					1.2 / -0.9				
Corrected glare indices referring to 4168 lm total luminous flux											

IESNA TM-15-07

**Luminaire Classification System
For Outdoor Luminaires**

**BUG rating
B2 U0 G1**

UL 90-100°

0 lm
0%

BVH 80-90°

21.6 lm
0.5%

BH 60-80°

205.2 lm
4.9%

BM 30-60°

928 lm
22.1%

BL 0-30°

929.1 lm
22.1%

UH 100-180°

0 lm
0%

UL 90-100°

0 lm
0%

FVH 80-90°

21.6 lm
0.5%

FH 60-80°

205.2 lm
4.9%

FM 30-80°

928 lm
22.1%

FL 0-30°

929.1 lm
22.1%

